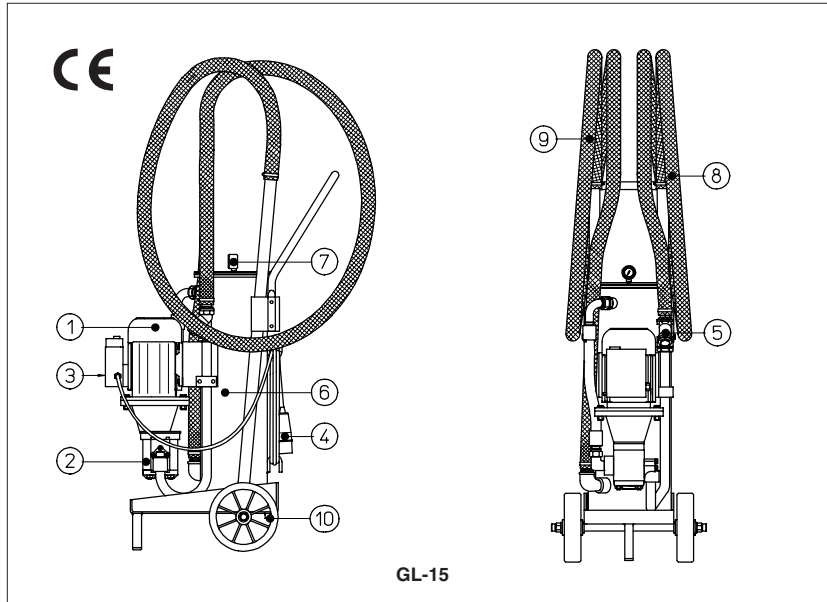


Filling and filtering unit type **GL-15**

obsolete components - availability on request



The filling and filtering unit GL-15 conforming to Machine Directive 2006/42/CE, is designed for filling, emptying and filtering of hydraulic circuits with fluid viscosity up to 400 cSt.

The cartridge of the pressure filter has wide filtering surface and can be easily checked and replaced without fluid leakages.

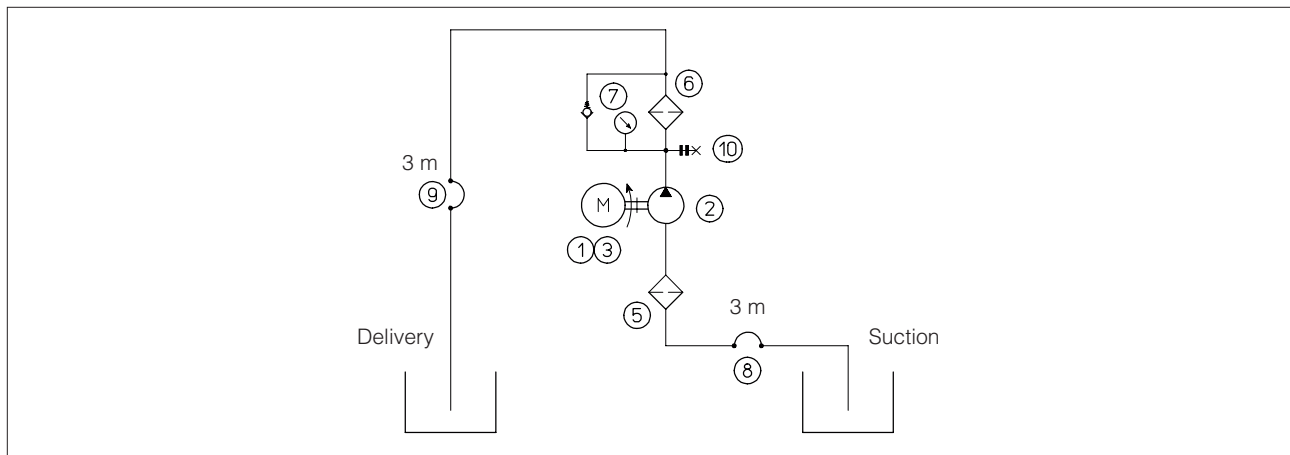
GL-15 unit includes:

- single-phase electric motor ①, coupled with hydraulic gear pump ②
- on/off electric switch and motor safety ③
- electric cable ④, 5 meters length with plug according to CEI norms
- suction filter ⑤
- delivery filter ⑥
- visual clogging indicator ⑦
- flexible hoses 3 meters length, for suction ⑧ and for delivery ⑨ with rigid end connections
- discharge plug ⑩ for filter body

1 MODEL CODE

GL-15	/	A	/	25	/	**
GL-15 = Filling and filtering unit				Absolute filtration rating: 03 = 3 µm 10 = 10 µm 25 = 25 µm		Series number
Cartridge material: A= microfibre						

2 MODEL CODE FOR SPARE PARTS AND MAIN CHARACTERISTICS

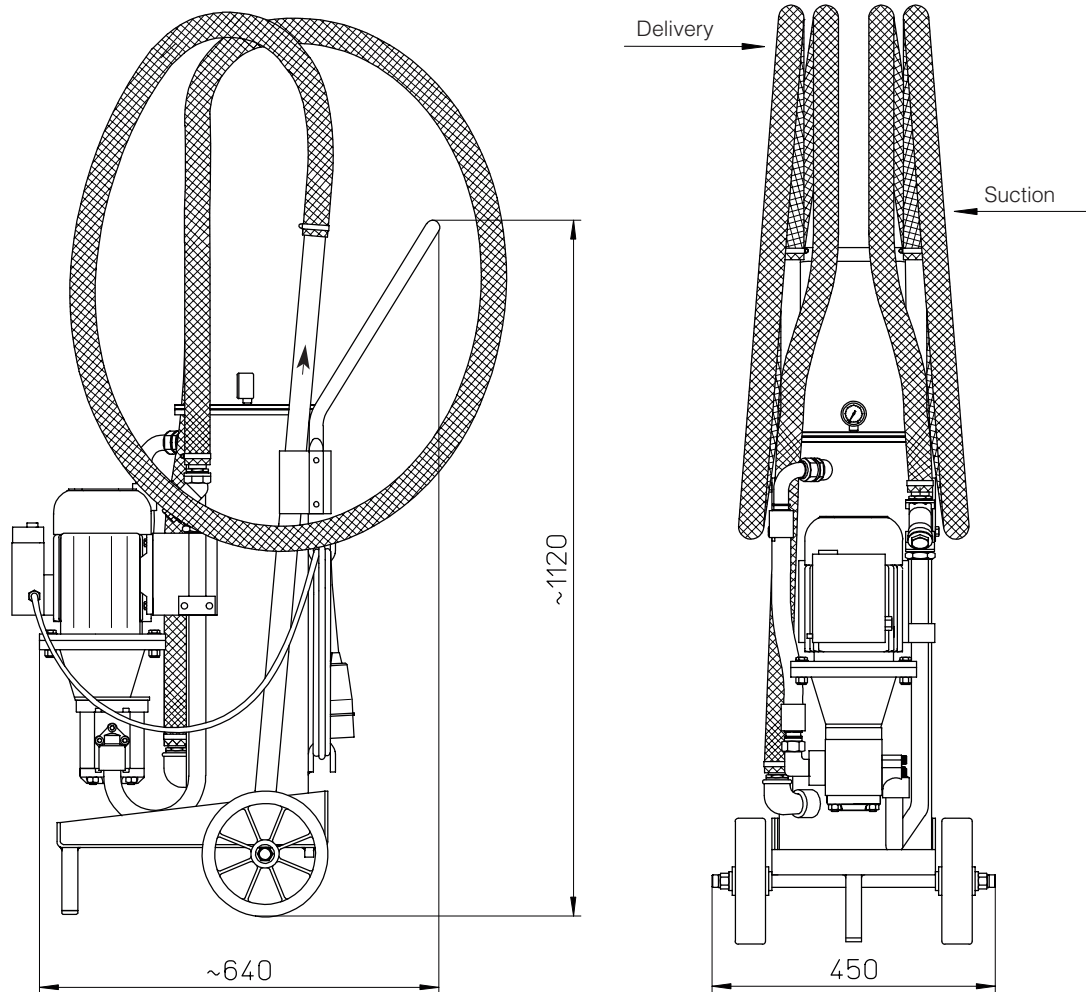


	Spare parts	Model code	General characteristics	
①	Electric motor	Y-MEL-GL15	Supply voltage: 220V/50Hz	Power: 0,7 kW
②	gear pump	PFG-227	Flow rate at 1450 rpm and 4 bar: 38 l/min	
⑤	suction filter	Y-DN-25	Filtration rating: mesh 0,8 mm	
⑥	Delivery filter cartridge	Y-MPI-630-4-C-0-A-A03 (3µ) Y-MPI-630-4-C-0-A-A10 (10µ) Y-MPI-630-4-C-0-A-A25 (25µ)	Inorganic microfibre: Bx > 200 Filtering surface: 13.100 cm ²	Δp max: 10 bar by-pass: 10 bar
⑦	Visual clogging indicator	SP-V1/FPF		

2 INSTRUCTIONS FOR USE

- 1) Submerge the rigid end connection of the suction hose in the tank of fluid that must be sucked up, avoiding sudden elbows, reduction of section and throttling in the flexible hose which could affect operation efficiency.
- 2) Insert the rigid end connection of the delivery hose in the tank where the fluid must be delivered.
- 3) Plug-in the unit (230V/50Hz). The motor is protected against overloads by means of thermal safety switch with external reset in electrical box. Rotation of the electric motor is independent of the electric plug connection.
- 4) Initially, operate the pump in short pulses with the on/off switch to verify the fluid flows in the suction hose. Once this has been established, the pump may be operated continuously.
- 5) To stop the operation switch to "0" position.
- 6) During the operation monitor the clogging indicator of the delivery filter: **the filter cartridge must be replaced when the indicator is over 2 bar.**
- 7) **For replacing the cartridge of the delivery filter, disconnect the electric plug from the power line**, discharge the body of the filter by means of the plug ⑩ and remove the filter cap by unscrewing the fastening bolts.
- 8) The metallic mesh of the suction filter must be cleaned at regular intervals by means of compressed air: to remove it, the filter cap must be screwed off by means of a 26 mm setscrew wrench.

3 DIMENSIONS [mm]



Mass: 65 Kg